



## Maytree Court, Grove Road, Mitcham CR4

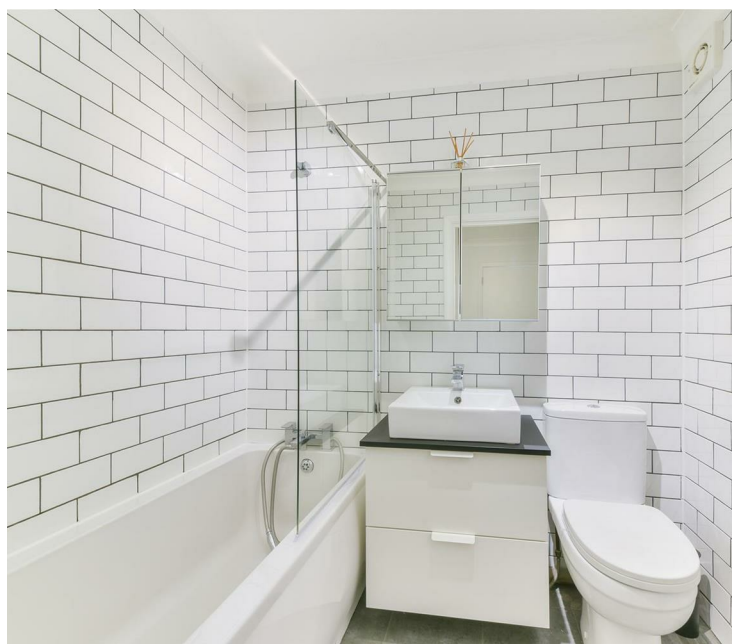
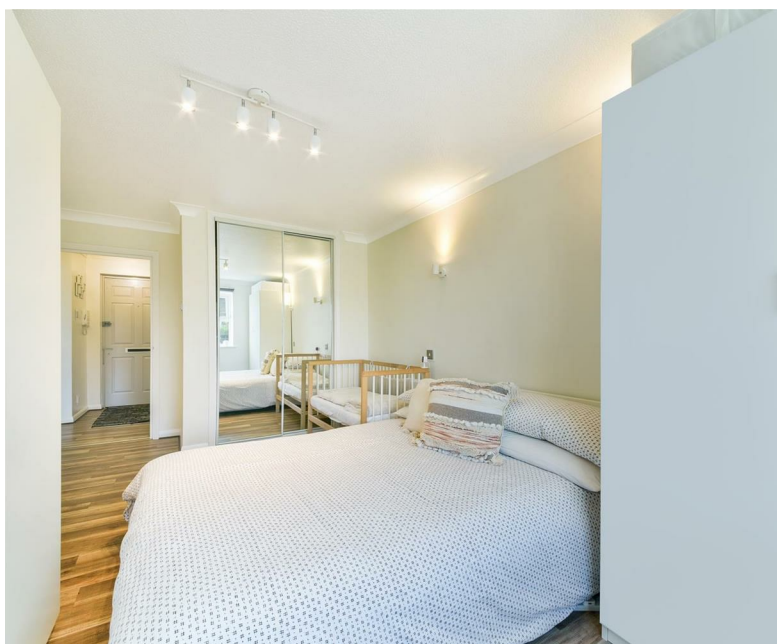
**£250,000 Leasehold**

Time2Move are pleased to offer a well presented and spacious ground floor flat at Grove Road CR4. Chain free and benefiting from a long lease, the property is situated within a few minutes' walk to Mitcham Eastfield's station, reliable bus routes, a wide choice of local shops and several green spaces.

Neutrally decorated and in an impeccable condition, it features one double bedroom, contemporary fitted kitchen, a sumptuous three-piece bathroom suite and some internal storage. The reception is of a good size and ideal for entertaining or just relaxing.

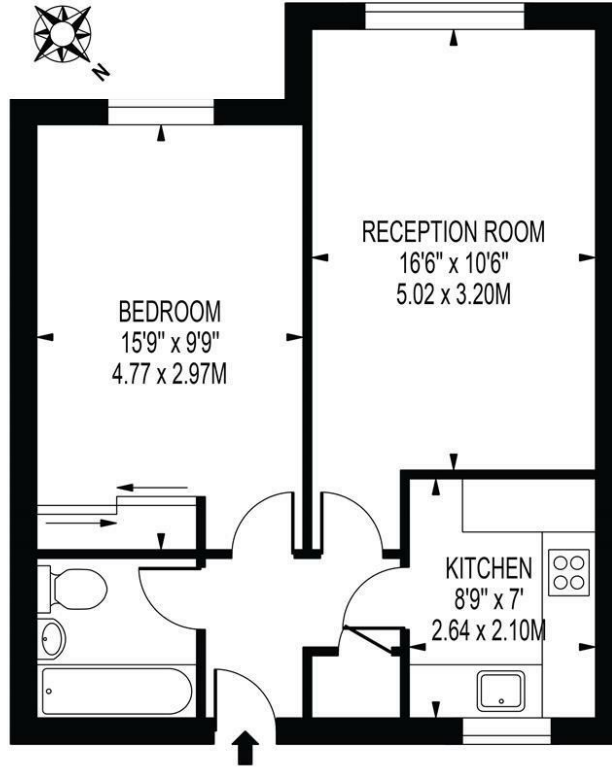
This property is ideally placed and priced to appeal to all types of buyers. Whether you are an investor looking for a good rental return, a first-time buyer aiming to get on the ladder or an elderly person downsizing, it's worth booking a viewing.

- Ground Floor
- One Bedroom
- Great Condition
- Seperate Fitted Kitchen
- Internal Storage
- Secured Entry
- Allocated Parking
- Chain Free



# MAYTREE COURT

APPROXIMATE GROSS INTERNAL FLOOR AREA: 492 SQ FT - 45.73 SQ M



GROUND FLOOR

FOR ILLUSTRATION PURPOSES ONLY

THIS FLOOR PLAN SHOULD BE USED AS A GENERAL OUTLINE FOR GUIDANCE ONLY AND DOES NOT CONSTITUTE IN WHOLE OR IN PART AN OFFER OR CONTRACT. ANY INTENDING PURCHASER OR LESSEE SHOULD SATISFY THEMSELVES BY INSPECTION, SEARCHES, ENQUIRIES AND FULL SURVEY AS TO THE CORRECTNESS OF EACH STATEMENT. ANY AREAS, MEASUREMENTS OR DISTANCES QUOTED ARE APPROXIMATE AND SHOULD NOT BE USED TO VALUE A PROPERTY OR BE THE BASIS OF ANY SALE OR LET.

Energy Efficiency Rating		Current	Potential
Very energy efficient - lower running costs			
(92 plus) <b>A</b>			
(81-91) <b>B</b>			
(69-80) <b>C</b>			
(55-68) <b>D</b>			
(39-54) <b>E</b>			
(21-38) <b>F</b>			
(1-20) <b>G</b>			
Not energy efficient - higher running costs			
<b>England &amp; Wales</b>	EU Directive 2002/91/EC		

Environmental Impact (CO <sub>2</sub> ) Rating		Current	Potential
Very environmentally friendly - lower CO <sub>2</sub> emissions			
(92 plus) <b>A</b>			
(81-91) <b>B</b>			
(69-80) <b>C</b>			
(55-68) <b>D</b>			
(39-54) <b>E</b>			
(21-38) <b>F</b>			
(1-20) <b>G</b>			
Not environmentally friendly - higher CO <sub>2</sub> emissions			
<b>England &amp; Wales</b>	EU Directive 2002/91/EC		

